

# Maxima® by HENRY SCHEIN®

## MAXIMA GLASS FIBRE REINFORCED POSTS AND REAMERS – RADIOPAQUE AND LIGHT CONDUCTING



Henry Schein Fibre posts are highly radiopaque (350% Al.) and light conducting ( $\geq 5\text{mW}$ ).  
Due to their cylindro-conical structure, they are made to fit to the natural anatomy of the root canal.

9006456	Maxima Glass fibre posts – Starter kit: 4 x 5 posts & 4 reamers
9006457	Maxima Glass fibre posts: refill, no: 1 $\varnothing$ 1.25 $\varnothing$ 0.8 mm, 10 pcs., white
9006458	Maxima Glass fibre posts: refill, no: 2 $\varnothing$ 1.5 $\varnothing$ 0.9 mm, 10 pcs., yellow
9006459	Maxima Glass fibre posts: refill, no: 3 $\varnothing$ 1.8 $\varnothing$ 1 mm, 10 pcs., red
9006460	Maxima Glass fibre posts: refill, no: 4 $\varnothing$ 2.2 $\varnothing$ 1.2 mm, 10 pcs., blue
9006461	Maxima Reamer: refill, no: 1, 3 pcs., white
9006462	Maxima Reamer: refill, no: 2, 3 pcs., yellow
9006463	Maxima Reamer: refill, no: 3, 3 pcs., red
9006464	Maxima Reamer: refill, no: 4, 3 pcs., blue

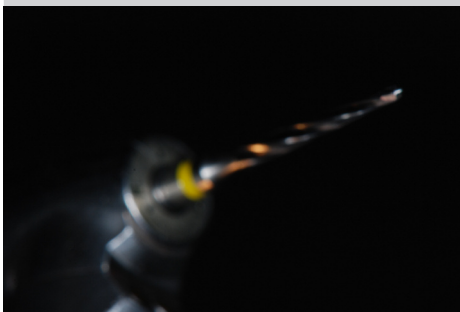
### Indications for use.

In cases of insufficient residual tooth structure, a fibre post is needed to support the coronal restoration.

### Step-by-step:

Select the correct post size according to the anatomical situation.

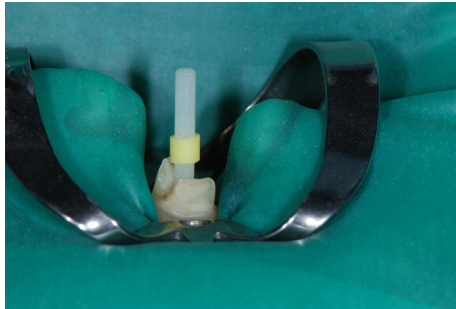
Remove the root filling using a Gates reamer (rotation speed 800-1200 rpm).



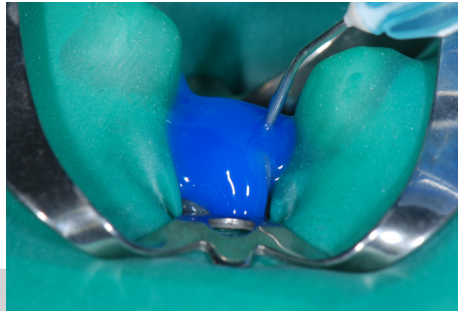
Calibrate the root canal using the corresponding Henry Schein reamer (rotation speed 1000-2000 rpm).



Place the rubber dam, (e.g. Henry Schein rubber dam) and rubber dam clamp (e.g. Henry Schein Rubber Dam Clamp)



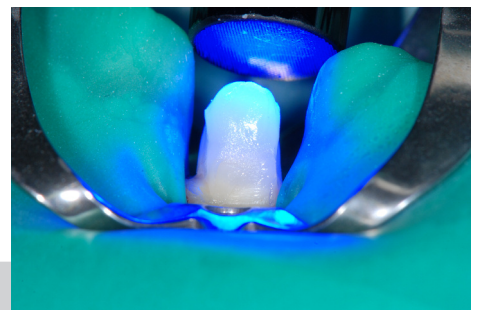
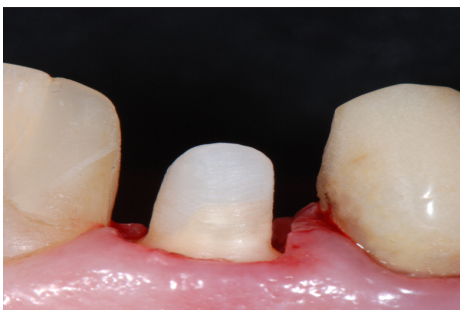
Check post for fit, trim if needed using a diamond disc and clean it with alcohol.



Apply etchant (e.g. Henry Schein Etch Gel), primer, bonding agent (e.g. Henry Schein Self etching bonding) according to manufacturer's instructions, or recommended self-etch bonding system, using a micro-applicator (e.g. Henry Schein round tip). Rinse for 20 seconds. Dry with air that is oil and water free. The etched enamel should have a chalky white appearance.



Apply the composite cement in the root canal and on the post, insert post into root canal and light cure (Henry Schein LED light).



Commence core build-up immediately using a composite core build-up material.

### Recommendation

Henry Schein recommends disinfection of the rotary instruments using appropriate cleaning agent and sterilisation in an autoclave (134°) before each use. Rubber dam (e.g. Henry Schein rubber dam) is recommended whenever possible.

Distributed by: (US only)



**HENRY SCHEIN INC.**  
135 DURYEA ROAD  
Melville, NY 11747 USA



**HENRY SCHEIN U.K. HOLDINGS LTD.**  
MEDCARE HOUSE, CENTURION CLOSE  
GILLINGHAM BUSINESS PARK  
GILLINGHAM, ME8 0SB U.K.  
[www.henryscheinbrand.com](http://www.henryscheinbrand.com)