

# Maxima<sup>®</sup> Rotary NiTi

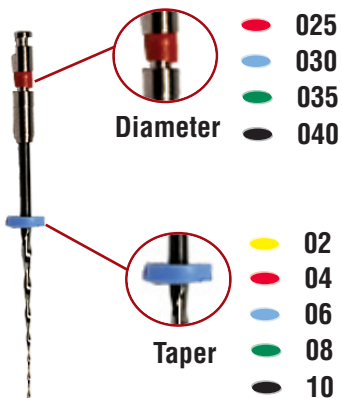
Henry Schein's Maxima rotary NiTi files are specially developed for general root canal treatments and have the following advantages:

*Easy to use, with just 4 files 80% of the canals can be treated.*

*Safe to use, file design does not change the morphology of the canal apically.*

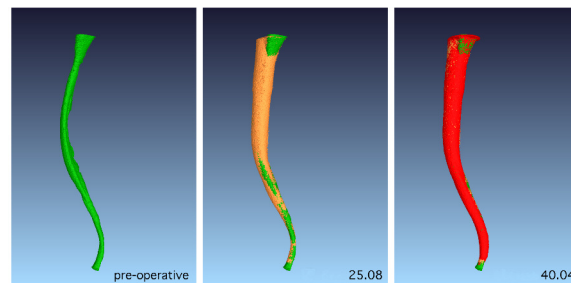
*Efficient cutting at 500rpm.*

The Maxima NiTi files also have been reported as excellent files to remove gutta percha when endo-retreatment is necessary. This makes the Maxima NiTi file a competitively priced, all-round system and a "must have" in your endo routines.



Product code	description	contents
9006079	Intro Pack 25mm (Tap10-025, Tap 08-025, Tap 06-025, Tap 04-025)	4
9006080	Opener Taper 10-025 8mm	6
9006081	Opener Taper 08-025 8mm	6
9006082	Taper 06-025 16mm	6
9006083	Taper 04-025 16mm	6
9006084	Taper 02-025 16mm	6
9006085	Apical Taper 06-030 25mm	6
9006086	Apical Taper 06-035 25mm	6
9006087	Apical Taper 04-040 25mm	6

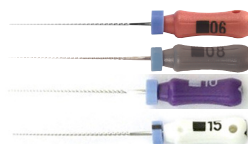
Tested by the University of Zürich



Made in Switzerland



- 301106 MAXIMA<sup>®</sup> Files-K 21 mm #06
- 301108 MAXIMA<sup>®</sup> Files-K 21 mm #08
- 301110 MAXIMA<sup>®</sup> Files-K 21 mm #10
- 301115 MAXIMA<sup>®</sup> Files-K 21 mm #15



Distributed by: (US only)

**HENRY SCHEIN INC.**  
 135 DURYEA ROAD  
 Melville, NY 11747 USA

**HENRY SCHEIN U.K. HOLDINGS LTD.**  
 MEDCARE HOUSE, CENTURION CLOSE  
 GILLINGHAM BUSINESS PARK  
 GILLINGHAM, ME8 0SB U.K.  
[www.henryscheinbrand.com](http://www.henryscheinbrand.com)

EC REP



Made in Switzerland

Assortment: 9006079

# MAXIMA : 3 STEPS

*Perfect Endo in just three steps.*



## Step 1

### Coronal part of the canal

After taking the initial X ray and establishing canal length, probe the canal with a Maxima K file with diameter 06, 08, 10 or 15. If glide path is established start the canal preparation using the **Maxima Taper 10-025 (1a)** and **Taper 08-025 (1b)**. Irrigate the canal regularly with Sodium hypochlorite solution (1ml).

## Step 2

### Medial part of the canal

Continue the preparation of the medial part of the canal, alternately using the manual K file, **Maxima Taper 08-025** and the **Maxima Taper 06-025 (2)** with brushing upwards movements to reach working length. Do not force the file apically. Irrigate the canal regularly with Sodium hypochlorite solution (1ml). When working length is reached use the **Maxima Taper 10-025** to create a smooth coronal opening.

## Step 3

### Final canal preparation

Continue the preparation of the apical part of the canal using **Maxima Taper 04-025 (3)** with brushing upwards movements to reach working length. Do not force the file apically. Irrigate the canal regularly with Sodium hypochlorite solution (1ml). If the morphology of the canal indicates, use (as indicated above) the **Maxima Taper 06-035** and Maxima **06-040** for final preparation.

